



SALTY

HEAD-TO-TOE UNIFORM COLLECTION

Wear your Wild





Safari Wear | PPE | Corporate Branding



Contact us



+267 77 686 764
+267 78 129 184 (WhatsApp)



sales2@microville.co.bw
anhenka@microville.co.bw
sales1@microville.co.bw



www.microville.co.bw



Gaborone: Unit 8D 36 Square 30 Plot 73872
New Industrial Phakalane Gaborone, Botswana

Ghanzi: Tau Mall (next to FNB), Ghanzi,
Botswana

MENS

SALTY
EST. 1957

Wear your Wild 

SALTY
EST. 1957

8625 - Hangwe Bush Shirt S/S

FABRIC:
100% COTTON
140 g/m²

WASH:
ENZYME WASH FOR FATIGUED LOOK

FIT:
REGULAR FIT

COLOURS:

	FATIGUE		DESERT KHAKI
---	---------	---	--------------

CARE INSTRUCTIONS:



SALTY HEAD-TO-TOE UNIFORM COLLECTION

Wear your Wild 

SALTY
EST. 1957

8555 - Masai Mara Bush Shirt

FABRIC:
100% COTTON
140 g/m²

WASH:
ENZYME WASH FOR FATIGUED LOOK

FIT:
REGULAR FIT

COLOURS:

	FATIGUE		DESERT KHAKI
---	---------	---	--------------

CARE INSTRUCTIONS:



SALTY HEAD-TO-TOE UNIFORM COLLECTION

Wear your Wild 

SALTY
EST. 1957

7284 - Caprivi Safari Jacket

FABRIC:

OUTER | 100% COTTON 3/1 TWILL
285g/m², LINING | QUILTED
POLYESTER BODY 100% COTTON SLEEVES

WASH:

ENZYME WASH FOR FATIGUED LOOK

COLOURS:



FATIGUE



DESERT KHAKI

FIT:

REGULAR FIT

CARE INSTRUCTIONS:



SALTY HEAD-TO-TOE UNIFORM COLLECTION

Wear your Wild

SALTY
EST. 1957

6241 - Epic Cargo Kortbroek

FABRIC:


100% BRUSHED COTTON CANVAS
260 g/m²

WASH:

ENZYME WASH FOR FATIGUED LOOK

COLOURS:

 FATIGUE

 DESERT KHAKI

CARE INSTRUCTIONS:



SALTY HEAD-TO-TOE UNIFORM COLLECTION

Wear your Wild 

SALTY
EST. 1957

8774 - Virunga Cargo Shorts

FABRIC:

100% COTTON 3/1 RINGSPUN TWILL
285 g/m²

FIT:

REGULAR FIT

WASH:

ENZYME WASH FOR FATIGUED LOOK

COLOURS:

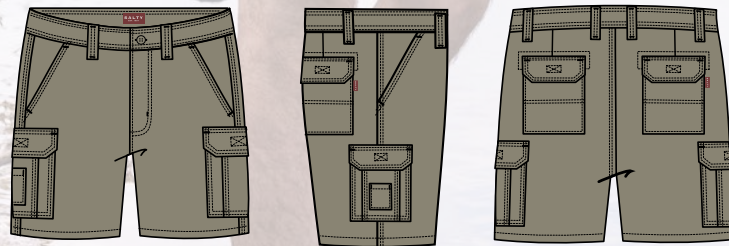


FATIGUE



DESERT KHAKI

CARE INSTRUCTIONS:



SALTY HEAD-TO-TOE UNIFORM COLLECTION

Wear your Wild

SALTY
EST. 1957

5860 - Rhino PT Shorts

FABRIC:

100% COTTON 2/1 FINE TWILL
140 g/m²

FIT:

REGULAR FIT

WASH:

ENZYME WASH FOR FATIGUED LOOK

COLOURS:



FATIGUE



DESERT KHAKI

CARE INSTRUCTIONS:



SALTY HEAD-TO-TOE UNIFORM COLLECTION

Wear your Wild

SALTY
EST. 1957

8751 - Gorongosa Chino

FABRIC:

100% COTTON 3/1 RINGSPUN TWILL
285 g/m²

FIT:

REGULAR FIT

WASH:

ENZYME WASH FOR FATIGUED LOOK

COLOURS:



FATIGUE



DESERT KHAKI

CARE INSTRUCTIONS:





SALTY
EST. 1957

7880 - Tsavo Stretch Cargo Long

FABRIC:
STRETCH CANVAS
60% / 40% POLYCANVAS

WASH:
ENZYME WASH FOR FATIGUED LOOK

FIT:
SLIM FIT

COLOURS:

	FATIGUE		DESERT KHAKI
---	---------	---	--------------

CARE INSTRUCTIONS:



SALTY HEAD-TO-TOE UNIFORM COLLECTION

Wear your Wild 

SALTY
EST. 1957

EM043 - Trailblazer Cargos

FABRIC:

100% COTTON 3/1 RINGSPUN TWILL
285 g/m²

FIT:

REGULAR FIT

WASH:

ENZYME WASH FOR FATIGUED LOOK

COLOURS:

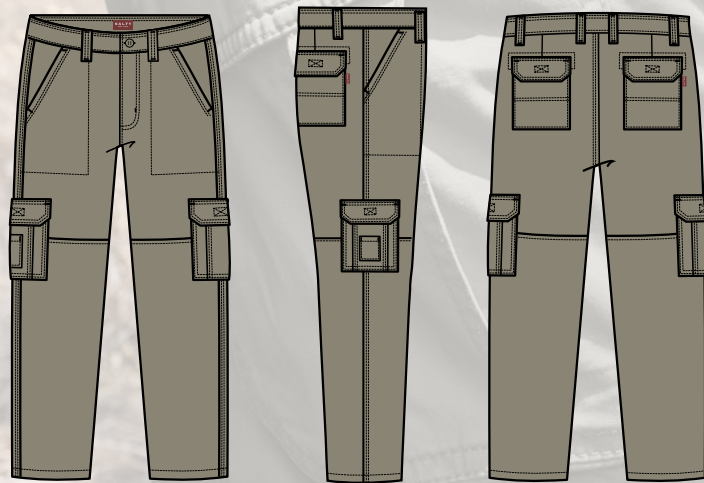


FATIGUE



DESERT KHAKI

CARE INSTRUCTIONS:



SALTY
EST. 1957

8261 - Salonga Two Tone Cargos

FABRIC:
STRETCHED CANVAS

WASH:
ENZYME WASH FOR FATIGUED LOOK

FIT:
SLIM FIT

COLOURS:

 TAUPE & FATIGUE  GREY & NAVY

CARE INSTRUCTIONS:



SALTY HEAD-TO-TOE UNIFORM COLLECTION

Wear your Wild 

SALTY
EST. 1957

7395 - Etosha Softshell Jacket

FABRIC:

OUTER | 92% POLYESTER 8%
SPANDEX 310g/m² INNER | FLEECE LINED
SIDE ENTRY POCKETS

COLOURS:



BLACK



OLIVE



NAVY



GREY



CROCODILE

FIT:

REGULAR FIT

CARE INSTRUCTIONS:



SALTY HEAD-TO-TOE UNIFORM COLLECTION

Wear your Wild



WOMEN'S

SALTY
EST. 1957

Wear your Wild 

SALTY
EST. 1957

7338 - Okavango Safari Jacket

FABRIC:

OUTER | 100% COTTON
3/1 TWILL 285 g/m² LINING,
POLYESTER SHERPA BODY
100% COTTON SLEEVES

WASH:

ENZYME WASH FOR FATIGUED LOOK

COLOURS:



FATIGUE



DESERT KHAKI

FIT:

REGULAR FIT

CARE INSTRUCTIONS:



SALTY HEAD-TO-TOE UNIFORM COLLECTION

Wear your Wild

SALTY
EST. 1957

8651 - Savannah Women's L/S Bush Shirt

FABRIC:

100% COTTON
140 g/m², 2/1 TWILL

WASH:

ENZYME WASH FOR FATIGUED LOOK

COLOURS:

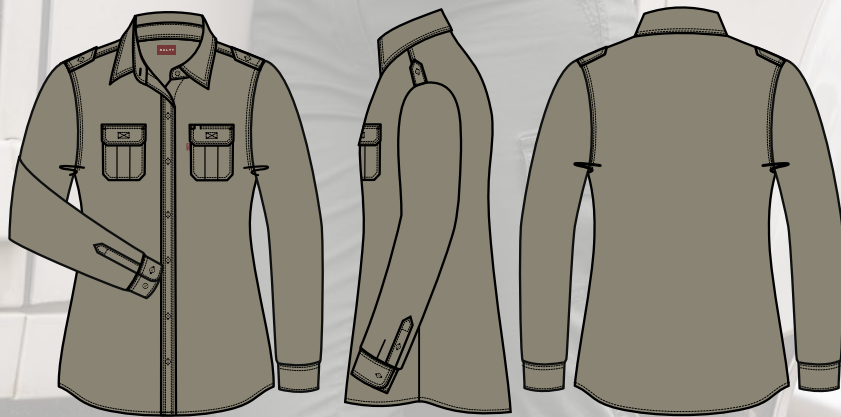
 FATIGUE

 DESERT KHAKI

FIT:

REGULAR FIT

CARE INSTRUCTIONS:



SALTY HEAD-TO-TOE UNIFORM COLLECTION

Wear your Wild 



SALTY
EST. 1957

8650 - Savannah Women's S/S Bush Shirt

FABRIC:
100% COTTON
140 g/m², 2/1 TWILL

FIT:
REGULAR FIT

WASH:
ENZYME WASH FOR FATIGUED LOOK

COLOURS:

	FATIGUE		DESERT KHAKI
---	---------	---	--------------

CARE INSTRUCTIONS:

				
---	---	---	---	---



SALTY HEAD-TO-TOE UNIFORM COLLECTION

Wear your Wild 

SALTY
EST. 1957

8781 - Niassa Cargo Skirt

FABRIC:
100% COTTON
140 g/m², 2/1 TWILL

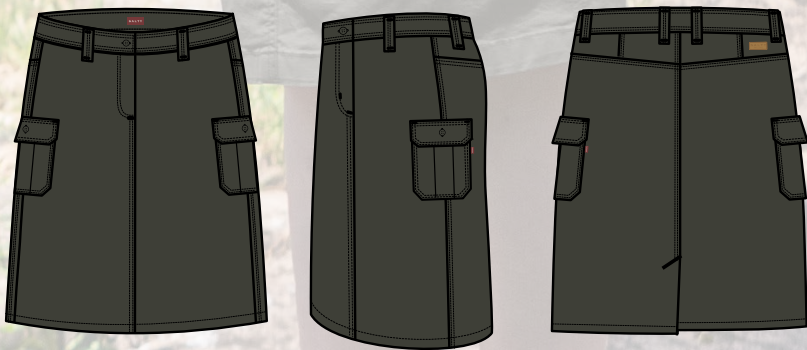
FIT:
REGULAR FIT

WASH:
ENZYME WASH FOR FATIGUED LOOK

COLOURS:

	FATIGUE		DESERT KHAKI
---	---------	---	--------------

CARE INSTRUCTIONS:



SALTY HEAD-TO-TOE UNIFORM COLLECTION

Wear your Wild 

SALTY
EST. 1957

8666 - Gambela Women's S/S Bush Dress

FABRIC:

100% COTTON
245 g/m², 2/1 TWILL

WASH:

ENZYME WASH FOR FATIGUED LOOK

COLOURS:



FATIGUE



DESERT KHAKI

FIT:

REGULAR FIT

CARE INSTRUCTIONS:



SALTY HEAD-TO-TOE UNIFORM COLLECTION

Wear your Wild

SALTY
EST. 1957

8652 - Kibale Women's Cargo Long

FABRIC:

STRETCH

98% COTTON 2% SPANDEX

245 g/m², 2/1 TWILL

WASH:

ENZYME WASH FOR FATIGUED LOOK

COLOURS:



FATIGUE



DESERT KHAKI

FIT:

REGULAR FIT

CARE INSTRUCTIONS:



SALTY HEAD-TO-TOE UNIFORM COLLECTION

Wear your Wild

SALTY
EST. 1957

7323 - Tuli Softshell Jacket

FABRIC:

OUTER | 92% POLYESTER 8%
SPANDEX 310g/m² INNER | FLEECE LINED
SIDE ENTRY POCKETS

COLOURS:



BLACK



OLIVE



NAVY



GREY



CROCODILE

FIT:

REGULAR FIT

CARE INSTRUCTIONS:



SALTY HEAD-TO-TOE UNIFORM COLLECTION

Wear your Wild

ACCESSORIES

SALTY
EST. 1957

Wear your Wild 

8479 - Majete Men's Bush T-Shirt

FABRIC:
100% RINGSPUN COTTON

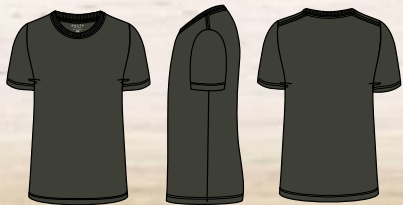
WASH:
ENZYME WASH FOR FATIGUED LOOK

FIT:
REGULAR FIT

COLOURS:

 FATIGUE  DESERT KHAKI

CARE INSTRUCTIONS:



8480 - Nyika Women's S/S Bush T-Shirt

FABRIC:
100% RINGSPUN COTTON

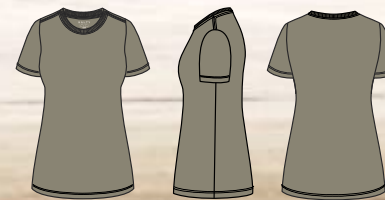
WASH:
ENZYME WASH FOR FATIGUED LOOK

FIT:
REGULAR FIT

COLOURS:

 FATIGUE  DESERT KHAKI

CARE INSTRUCTIONS:



8201 - Ondangwa Bush Hat

FABRIC:

100% COTTON 2/1 FINE TWILL
140 g/m²

FIT:

REGULAR FIT

WASH:

ENZYME WASH FOR FATIGUED LOOK

COLOURS:

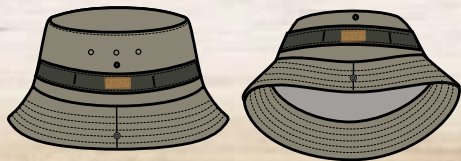


FATIGUE



DESERT KHAKI

CARE INSTRUCTIONS:



9169 - Rundu Bush Hat

FABRIC:

100% COTTON 2/1 FINE TWILL
140 g/m²

FIT:

REGULAR FIT

WASH:

ENZYME WASH FOR FATIGUED LOOK

COLOURS:

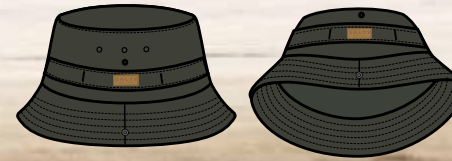


FATIGUE



DESERT KHAKI

CARE INSTRUCTIONS:





Safari Wear | PPE | Corporate Branding



Contact us



+267 77 686 764
+267 78 129 184 (WhatsApp)



sales2@microville.co.bw
anhenka@microville.co.bw
sales1@microville.co.bw



www.microville.co.bw



Gaborone: Unit 8D 36 Square 30 Plot 73872
New Industrial Phakalane Gaborone, Botswana

Ghanzi: Tau Mall (next to FNB), Ghanzi,
Botswana